

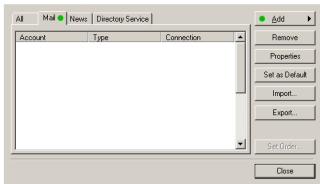


Outlook Express Mail Setup
dlat.net server

need help? phone 310 395 2595
contact83@designlatitudes.com



Outlook Express Mail Setup
dlat.net server





Outlook Express Mail Setup
dlat.net server

Internet E-mail Address



Your e-mail address is the address other people use to send e-mail messages to you.

E-mail address: ●

For example: someone@microsoft.com

< Back

Next >

Cancel



Outlook Express Mail Setup
dlat.net server

E-mail Server Names



My incoming mail server is a server.

Incoming mail (POP3, IMAP or HTTP) server:



An SMTP server is the server that is used for your outgoing e-mail.

Outgoing mail (SMTP) server:





Outlook Express Mail Setup
dlat.net server

Internet Mail Logon



Type the account name and password your Internet service provider has given you.

Account name:

●

Password:

●

● Remember password

If your Internet service provider requires you to use Secure Password Authentication (SPA) to access your mail account, select the Log On Using Secure Password Authentication (SPA) check box.

● Log on using Secure Password Authentication (SPA)

< Back

Next >

Cancel



Outlook Express Mail Setup
dlat.net server

Congratulations



You have successfully entered all of the information required to set up your account.
To save these settings, click Finish.

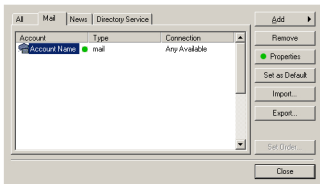
< Back

Finish

Cancel



Outlook Express Mail Setup
dlat.net server






Outlook Express Mail Setup
dlat.net server

General | Servers | Connection | Security | Advanced

Mail Account _____

 Type the name by which you would like to refer to these servers. For example: "Work" or "Microsoft Mail Server".

username

User Information

Name:

Organization:

E-mail address:

Reply address:

Include this account when receiving mail or synchronizing

OK Cancel Apply



Outlook Express Mail Setup dlat.net server

The screenshot shows the 'Servers' tab of the Outlook Express Mail Setup dialog box. The 'General' tab is selected. The 'Server Information' section shows 'My incoming mail server is a POP3 server.' The 'Incoming mail (POP3)' field contains 'pop.1and1.com' and the 'Outgoing mail (SMTP)' field contains 'smtp.1and1.com'. The 'Incoming Mail Server' section has 'Account name' set to 'username@domain.com' and 'Password' set to a series of dots. The 'Remember password' checkbox is checked, and the 'Log on using Secure Password Authentication' checkbox is unchecked. The 'Outgoing Mail Server' section has the 'My server requires authentication' checkbox checked. There are 'OK', 'Cancel', and 'Apply' buttons at the bottom.

General Servers Connection Security Advanced

Server Information

My incoming mail server is a POP3 server.

Incoming mail (POP3): pop.1and1.com

Outgoing mail (SMTP): smtp.1and1.com

Incoming Mail Server

Account name: username@domain.com

Password:

Remember password

Log on using Secure Password Authentication

Outgoing Mail Server

My server requires authentication Settings...

OK Cancel Apply



Outlook Express Mail Setup dlat.net server

The screenshot shows the 'Advanced' tab of the Outlook Express Mail Setup dialog box. The 'Server Port Numbers' section has 'Outgoing mail (SMTP)' set to 587 and 'Incoming mail (POP3)' set to 995. Both are checked for SSL. The 'Server Timeouts' section has a slider between 'Short' and 'Long' (1 minute). The 'Sending' section has 'Break apart messages larger than' set to 60 KB. The 'Delivery' section has 'Leave a copy of messages on server' checked, with 'Remove from server after' set to 5 days.

General Servers Connection Security **Advanced**

Server Port Numbers

Outgoing mail (SMTP): 587

This server requires a secure connection (SSL)

Incoming mail (POP3): 995

This server requires a secure connection (SSL)

Server Timeouts

Short Long 1 minute

Sending

Break apart messages larger than KB

Delivery

Leave a copy of messages on server

Remove from server after day(s)

Remove from server when deleted from 'Deleted Items'



Outlook Express Mail Setup
dlat.net server

